



Developing Mobile Linux  
Applications and  
Taking Them to Market

The Possibilities Are Open

# Mobile Linux - The Next Wave

Linux-enabled Device Shipments

Year  
Units in millions

2005  
2.50

2006  
3.12

2007  
8.17

2008  
19.09

2009  
38.33

2010  
73.52

2011  
133.40

2012  
203.91

# ACCESS Linux Platform™

**Applications**

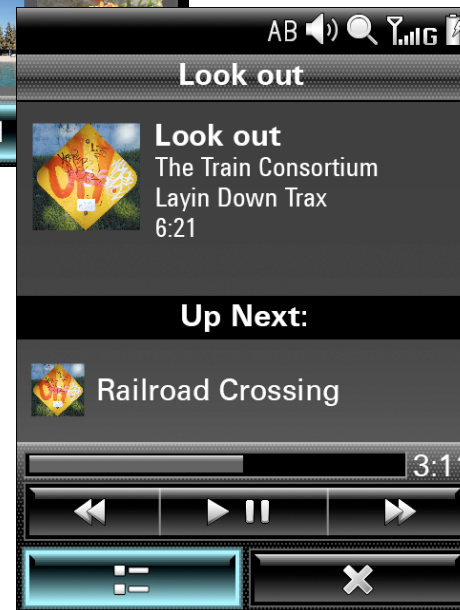
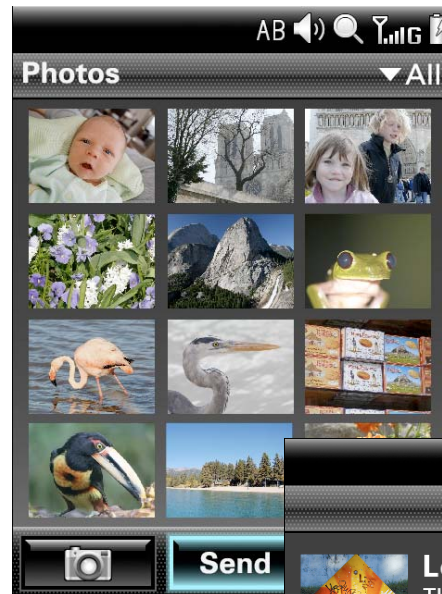
**Hiker Framework**

**ACCESS Proprietary**

**Open Source Software**



# Easy and Intuitive



# ACCESS Linux Platform Applications



Communications  
Suite



Entertainment  
Suite



Productivity  
Suite

# Three Development Environments



# Robust Development Tools

## Linux

Ubuntu  
Eclipse with gcc, gdb  
Glade UI Builder  
gcc tool chain  
Scratchbox  
Pre-Linker  
Phone Driver Development Kit

## Palm OS

Metrowerks CodeWarrior  
Palm OS Developer Suite

## Java

Eclipse  
NetBeans



# Technical and Business Support



**ADN**  
ACCESS Developer Network



**ACE**  
ACCESS Connect Ecosystem

Join us.

Mobile Linux

The Possibilities Are Open

